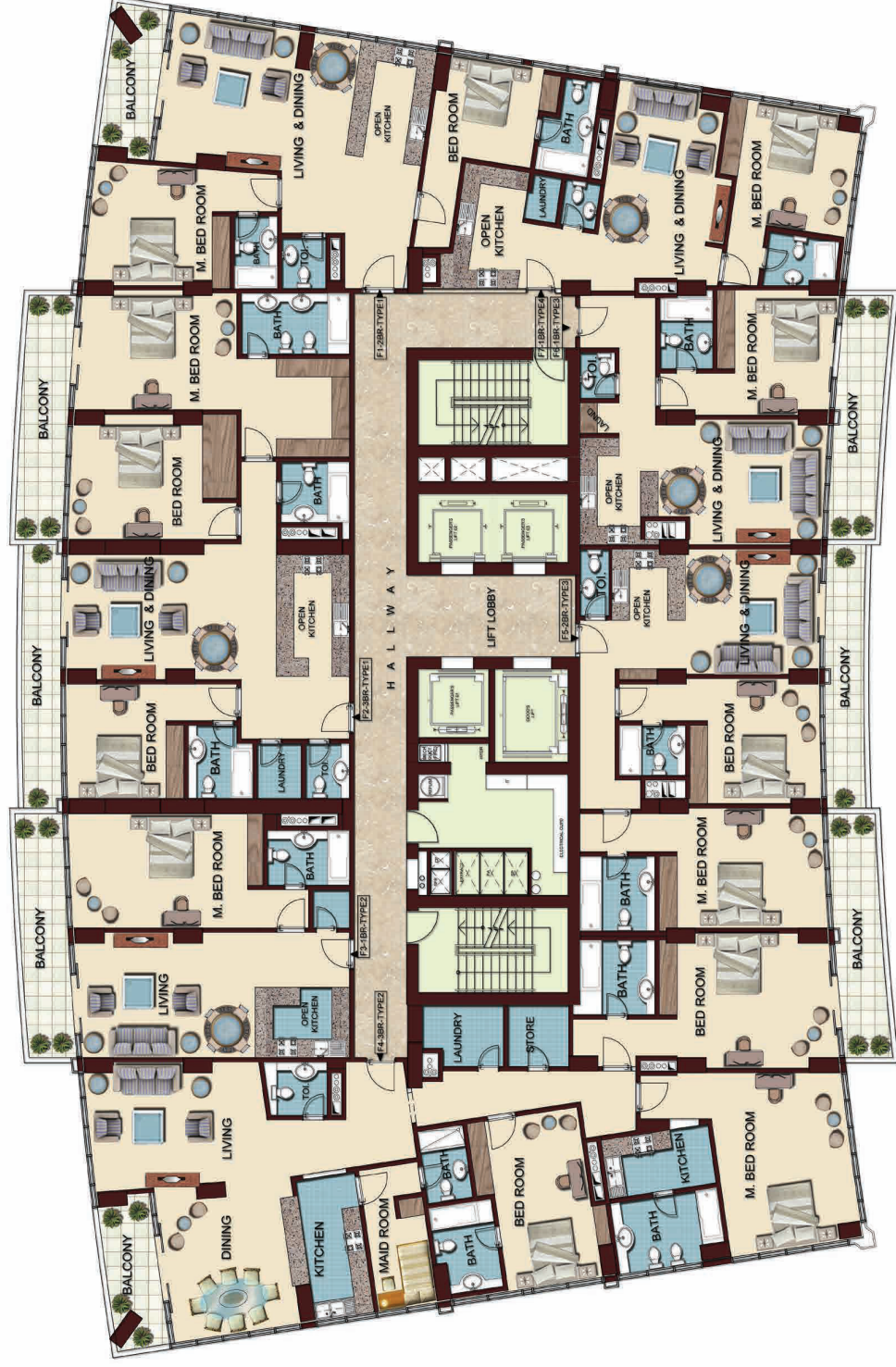


SIMPLEX

FLOOR PLANS



SIMPLEX FLOORS PLAN

# PROPOSED 2B+G+3P+38+ROOF HOTEL APPRATMENTS BUILDING

## FALT NO. 1 - 2BR - FLAT (TYPE 1)

FLAT AREA = 116.27 Sqmt. (1251.06 Sq.ft)  
BALCONY AREA = 9.73 Sqmt. (104.69 Sq.ft)  
TOTAL AREA = 126 Sqmt. (1355.75 Sqft.)



## FALT NO. 3 - 1BR - FLAT (TYPE 2)

FLAT AREA = 81.85 Sqmt. (885.00 Sq.ft)  
BALCONY AREA = 28.16 Sqmt. (303.00 Sq.ft)  
TOTAL AREA = 101.01 Sqmt. (1188.00 Sqft.)



## FALT NO. 2 - 3BR - FLAT (TYPE 1)

FLAT AREA = 166.69 Sqmt. (1795.00 Sq.ft)  
BALCONY AREA = 28.16 Sqmt. (303.00 Sq.ft)  
TOTAL AREA = 194.85 Sqmt. (2098.00 Sqft.)





**FALT NO. 4 - 3BR - FLAT (TYPE 2)**  
 FLAT AREA = 241.00 Sqmt. (2595.00 Sq.ft)  
 BALCONY AREA = 24.65 Sqmt. (265.23 Sq.ft)  
 TOTAL AREA = 265.65 Sqmt. (2860.23 Sqft.)

**FALT NO. 5 - 2BR - FLAT (TYPE 3)**  
 FLAT AREA = 106.74 Sqmt. (1150.00 Sq.ft)  
 BALCONY AREA = 13.24 Sqmt. (142.46 Sq.ft)  
 TOTAL AREA = 119.98 Sqmt. (1292.46 Sqft.)

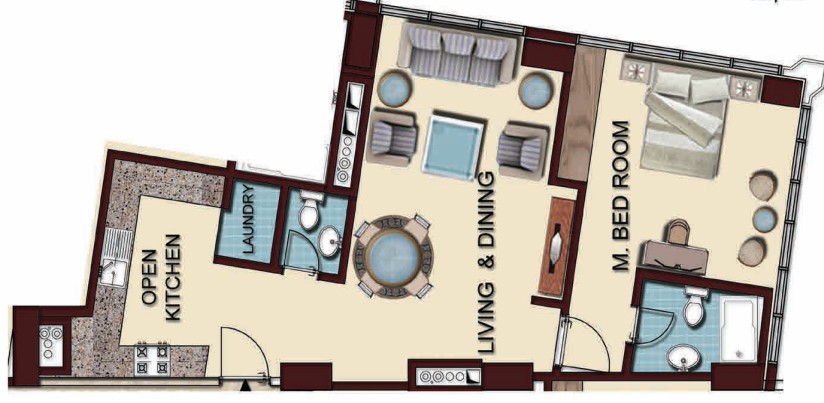


**FALT NO. 6 - 1BR - FLAT (TYPE 3)**

FLAT AREA = 72.69 Sqmt. (785.00 Sq.ft)

BALCONY AREA = 14.92 Sqmt. (160.53 Sq.ft)

TOTAL AREA = 87.61 Sqmt. (945.54 Sqft.)



**FALT NO. 7 - 1BR - FLAT (TYPE 4)**

FLAT AREA = 74.73 Sqmt. (805 Sq.ft)